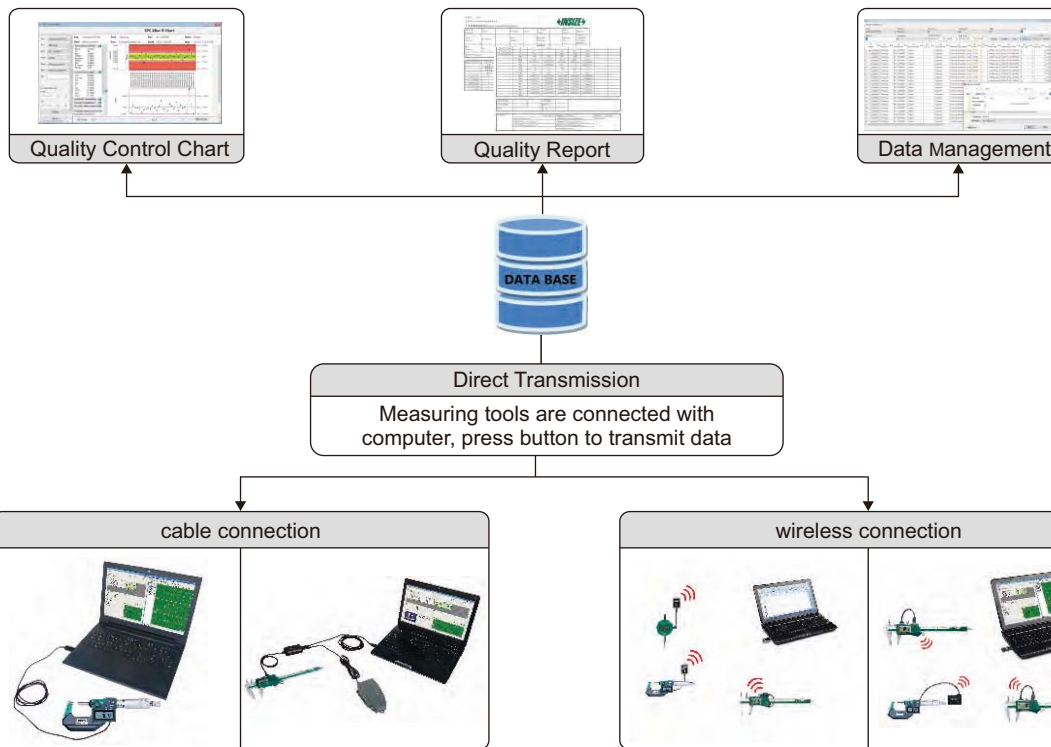
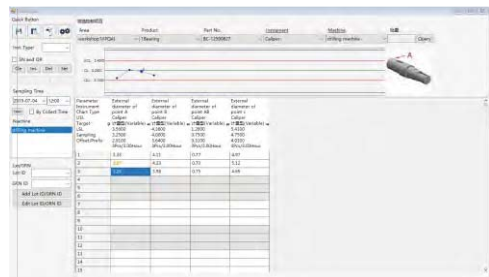


# MEASURING DATA MANAGEMENT SOFTWARE CODE 7316-10



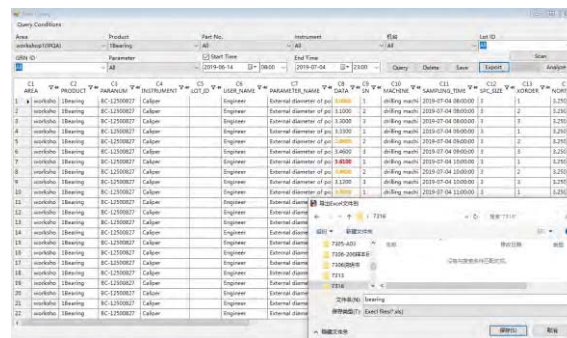
## Direct Transmission

- Transmit data through cables or wireless systems



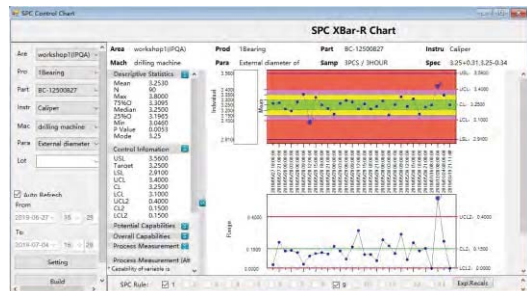
## Data Management

- Measuring data are stored in database



## Quality Control Chart

- Analyze the tendency of data, make production adjustment in advance



## Quality Report

- Generate different EXCEL report formats according to requirements

A screenshot of the software's quality report generation interface. It shows a table with columns for 'Process', 'Date', 'Operator', 'Instrument', and 'Spec'. The table contains data for various processes and dates. Below the table, there are options for generating reports in different formats, including 'Excel Report'.